

## 4.5.12. How to Import Data from SAP B1

In this article we describe:

- [imported data](#) and
- [data import workflow](#).

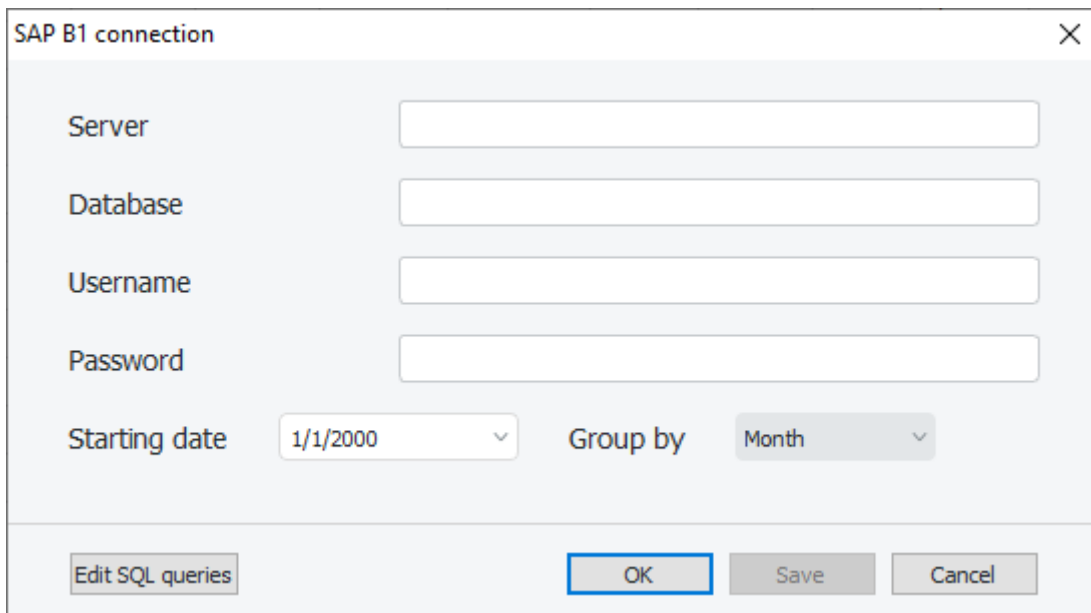
### Imported data

This connector utilizes several predefined SQL-queries which you can [customize](#) to your needs. The data, imported into Streamline, is described in the [Inventory Management Systems](#) article.

### Data Import Workflow

To create a new Streamline project based on SAP B1 data:

1. Go to the menu **File > New > SAP B1 connection**. The **SAP B1 connection** dialog appears (see figure below).



2. Enter the name of the server running the SQL Server with SAP B1 databases.

If you connect locally (Streamline is opened on the same computer where the SQL Server is installed), type `localhost` in this field.

If you connect remotely, enter IP address (or LAN name of the computer running the SQL Server) and SQL Server TCP Dynamic Port like <IP>, <port>, for example, 108.71.167.47, 1434. To connect remotely, you should [enable remote connections](#) to the SQL Server and [configure SQL Server TCP/IP ports properly](#).

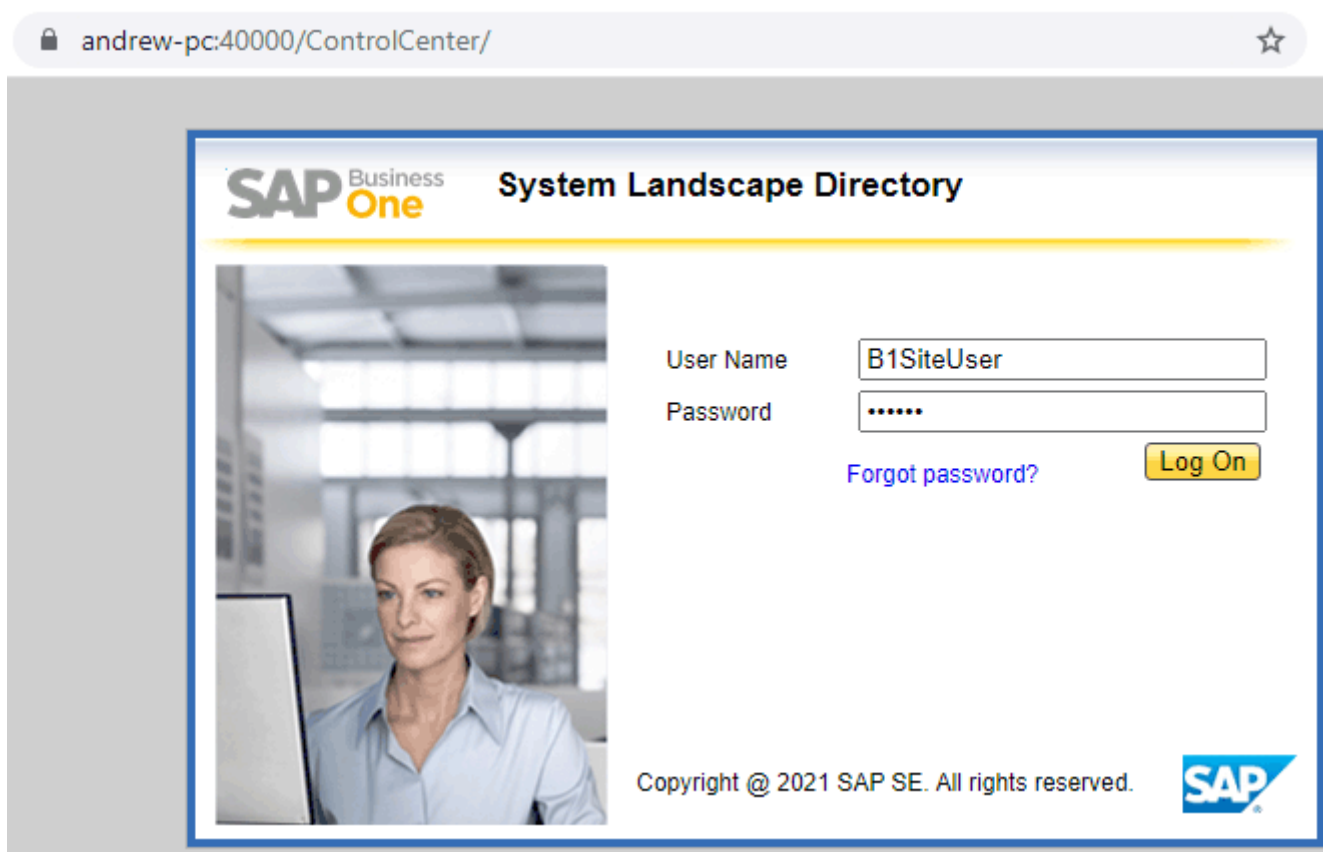
3. Enter the name of the SAP B1 database into the **Database** field. To figure out this name, do the following:

3.1. Connect to your SAP B1 SLD service by URL like

`https://<sap-server-name>:4000/ControlCenter/`

where **<sap-server-name>** is the LAN name of the machine running SAP B1 Server component, for example, `https://andrew-pc:40000/ControlCenter/`.

3.2. Enter your login and password specified during SAP B1 installation (see figure below).



3.3. Select the server, you are connecting to, in the first table. Now it shows you all the available SAP B1 databases on this server in the table below. Pick the database name from the **Schema Name** column of your company database. This is what we are looking for (see figure below).

The screenshot shows the SAP System Landscape Directory (SLD) interface. At the top, there is a navigation bar with tabs for 'DB Instances and Companies', 'Logical Machines', 'Components', 'Services', 'Security', 'External Mapping', and 'Global Settings'. The 'DB Instances and Companies' tab is active.

Under 'DB Instances (1)', there is a table with columns: Server Name, Server Type, Version, System DB Status, Database Authentication, and Backup Path. The first row is highlighted in yellow and has a red box around the 'Server Name' cell, which contains 'ANDREW-PC'. Below the table, the word 'Server' is written in red.

Under 'Companies (1)', there is a table with columns: Company Name, Schema Name, Version, Localization, Database User, Status, Export/Import Status, Last Export/Import, Last Successful Export, Export Schedule, Log, Company Status, Alert, and Mailer. The first row is highlighted in yellow and has a red box around the 'Schema Name' cell, which contains 'SBODemoUS'. Below the table, the word 'Database' is written in red.

4. Enter credentials of a SQL Server account having rights to read data from your database into the **Username** and **Password** fields. You can learn how to create such an account from [this article](#).

5. Enter or choose the date to start the import from in the **Starting date** control.

To get accurate forecasts, we recommend providing Streamline with at least 24 months of sales history.

2019/05/21 13:44

6. Choose the data aggregation period in the **Group by** control. Streamline automatically aggregates your data in the given periods (days, weeks, or months). For example, if you want to see the forecasts, replenishment plans, and other reports in months, group the data by month.

7. Click **OK** to start the import.

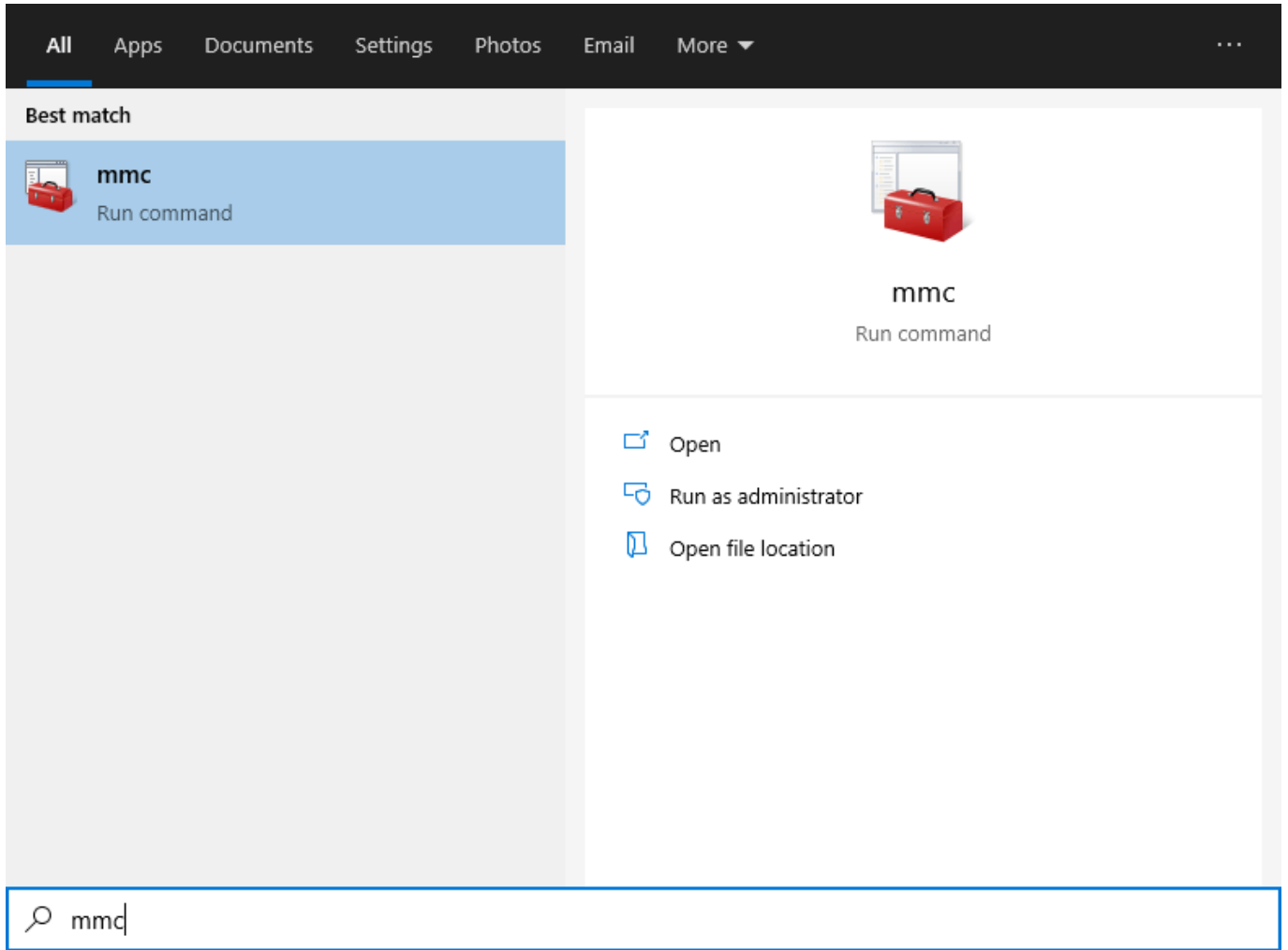
## Import options

The **Edit SQL queries** opens the [Database connection dialog](#) where you can customize default SQL-queries to meet your requirements.

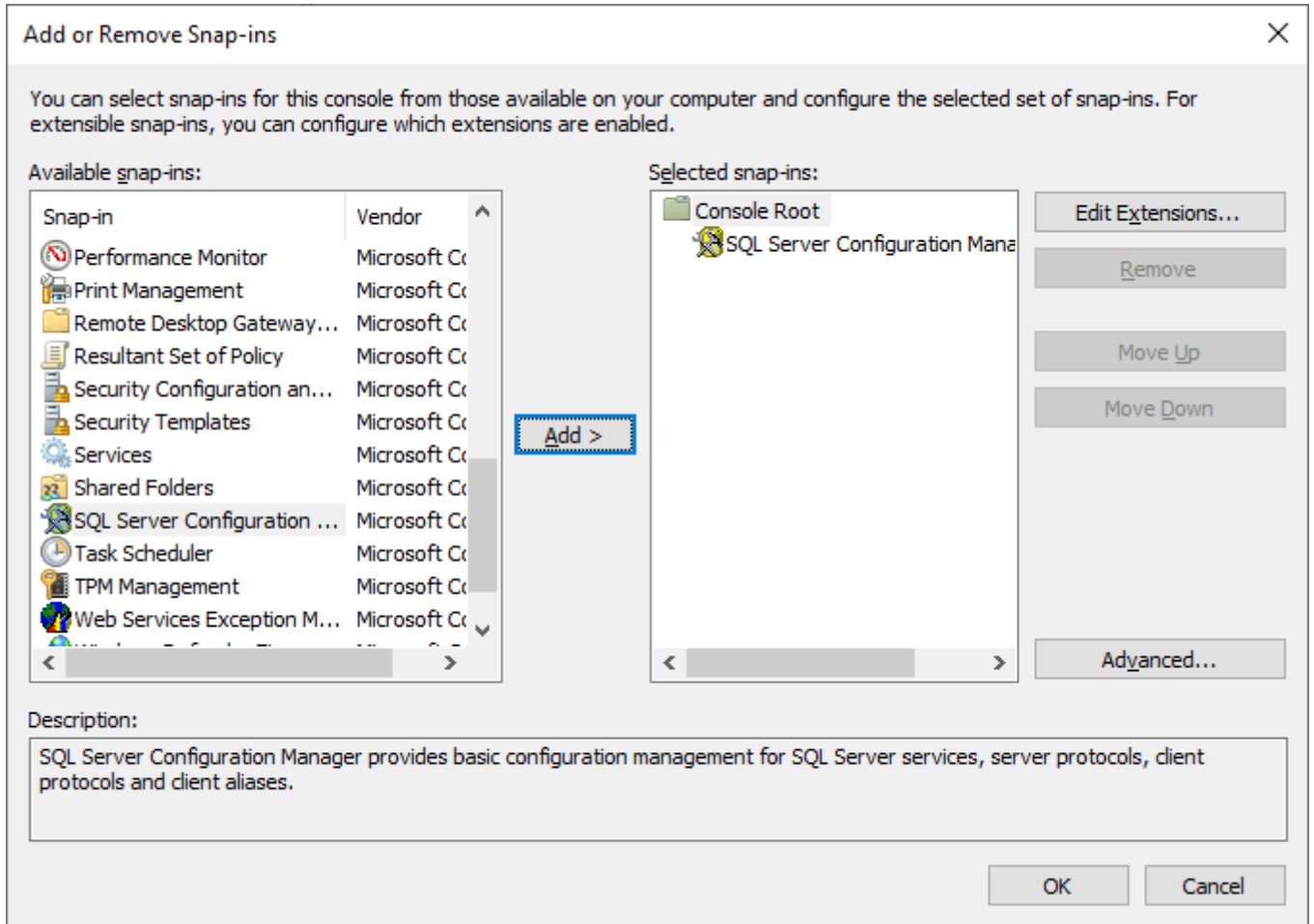
## Configuring SQL Server TCP Ports for Remote Connect

In order to Streamline and SLD service connect to SAP B1 SQL Server without any issues, we should set the SQL Server TCP ports properly. To do this:

1. Go to Windows applications search, type in 'mmc' and hit **Enter** (see figure below).

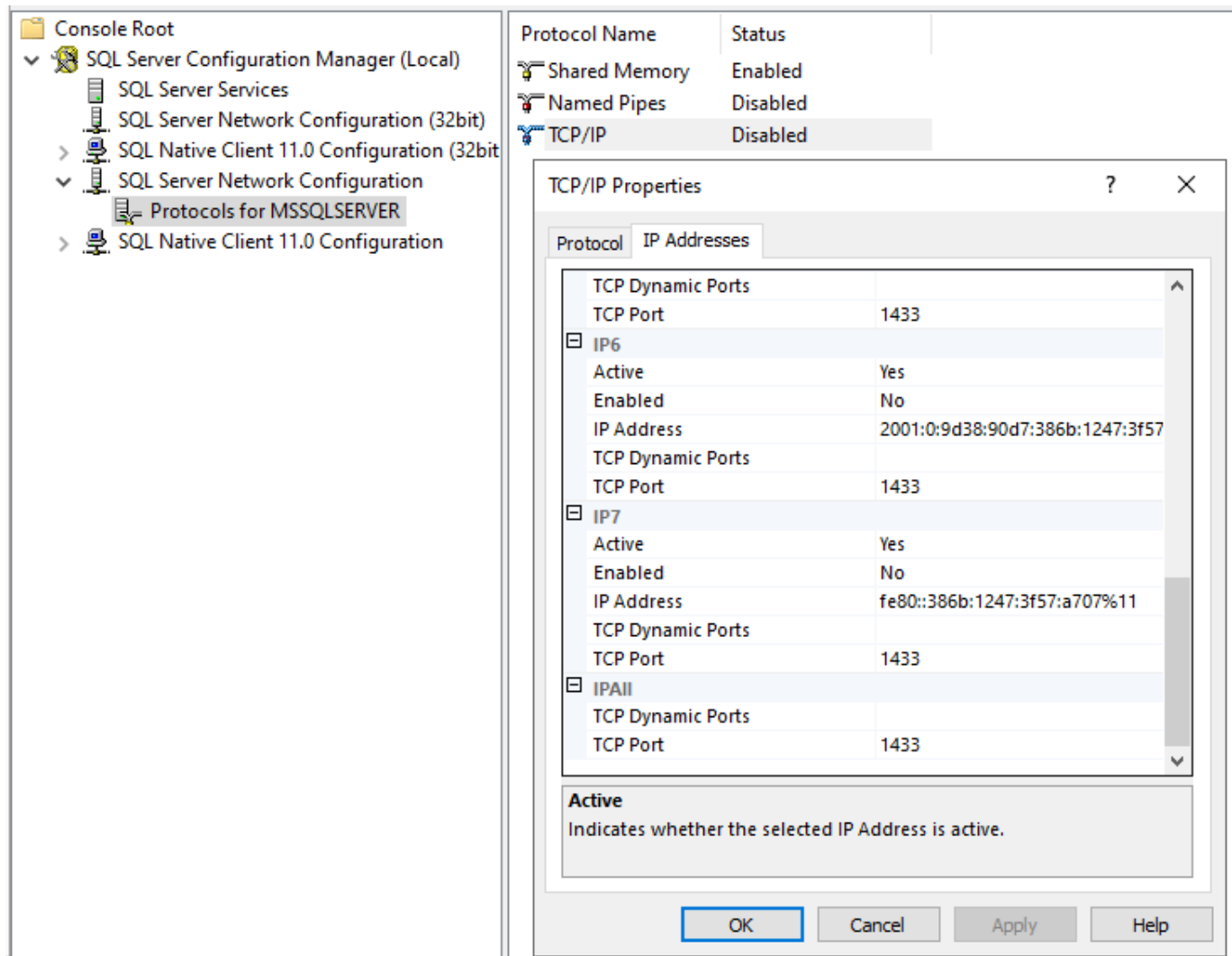


2. Go to menu **File > Add/Remove Snap In...**, select **SQL Server Configuration Manager** in the list on the left and click **Add** button. Then click **OK**. (see figure below).

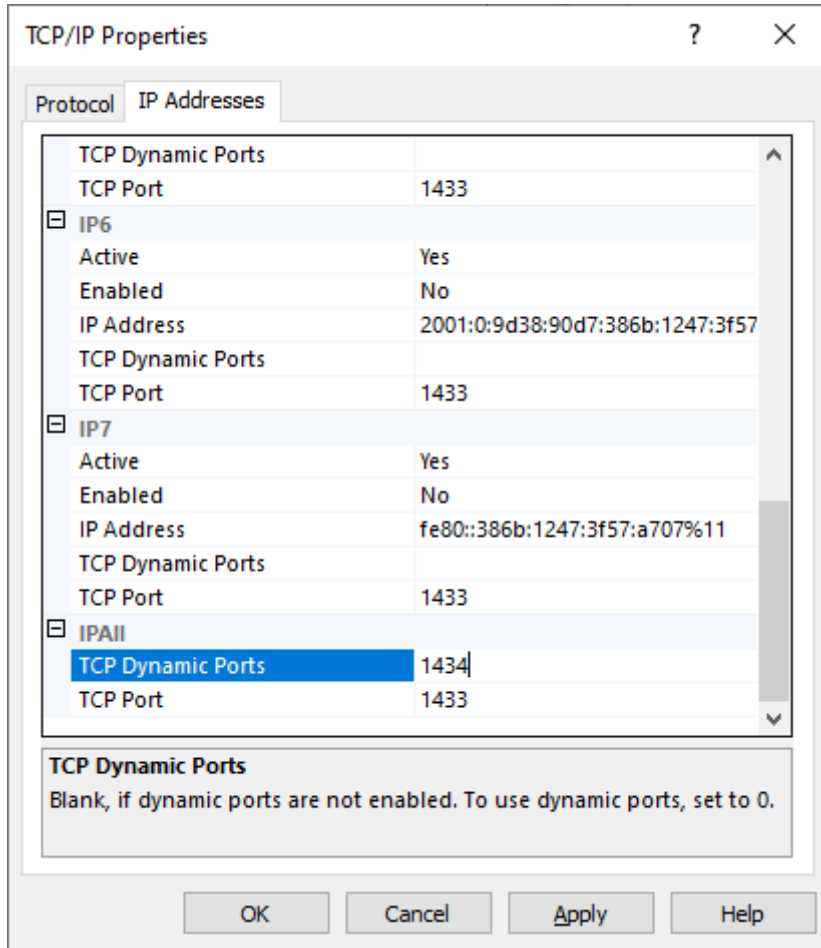


3. Expand the root node down to **Protocols for MSSQLSERVER** as shown in the figure below. Select it, then, right-click on the **TCP/IP** item in the list on the right, and select the **Properties** command from the context menu. Then, go to the **IP Addresses** tab of the dialog, and scroll it all the way down to the **IP All** section (see figure below).

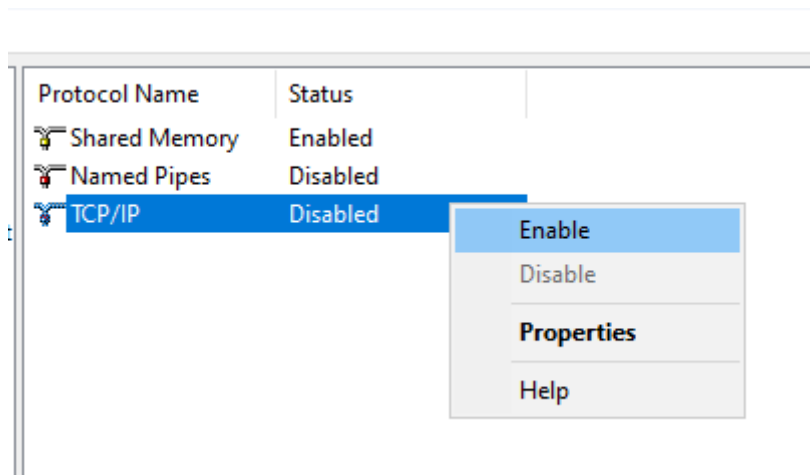
**MSSQLSERVER** is a default name for SQL Server instance; it will differ in case you gave another custom name when was installing SQL Server.



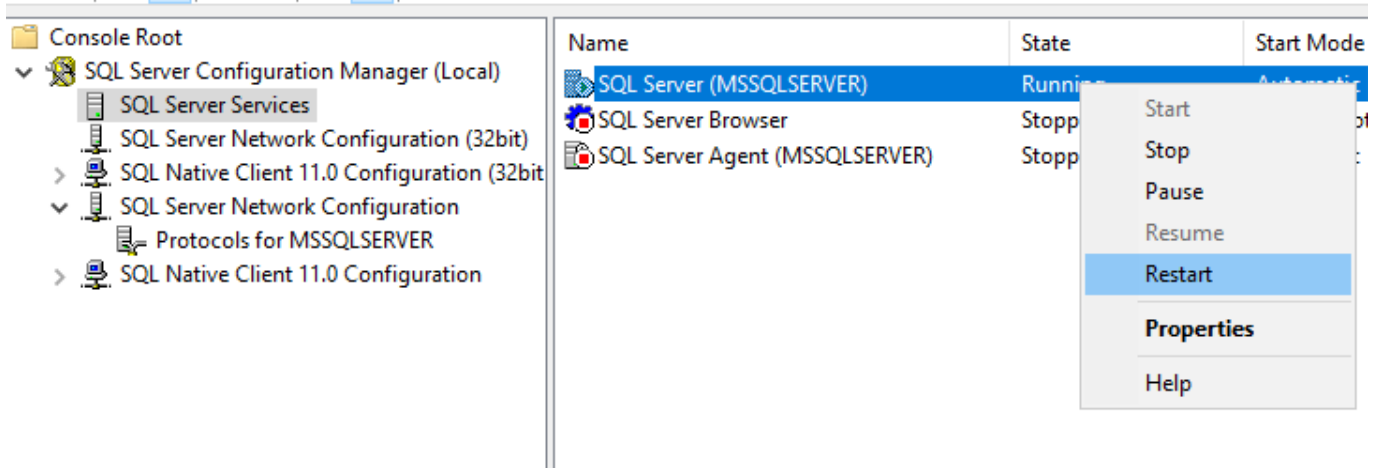
4. Set **TCP Dynamic Ports** field to any free port, for example, **1434**. This port will be used by [Streamline](#) to connect to the SAP B1 database (see figure below). **TCP Port** is used by SAP B1 SLD service to connect to SQL Server.



5. If **TCP/IP** Status is **Disabled**, right-click on the item, and select **Enable** command (see figure below).



6. After that, select **SQL Server Services** node on the left, then, right-click on the **SQL Server (MSSQLSERVER)** service on the right, and select **Restart** from the context menu (see figure below).



[Next: Shopify](#)

[Download PDF](#)

From: <https://gmdhsoftware.com/documentation-sl/> - **GMDH Streamline Docs**

Permanent link: <https://gmdhsoftware.com/documentation-sl/sap-b1-connection-guide>

Last update: **2023/03/13 12:29**

