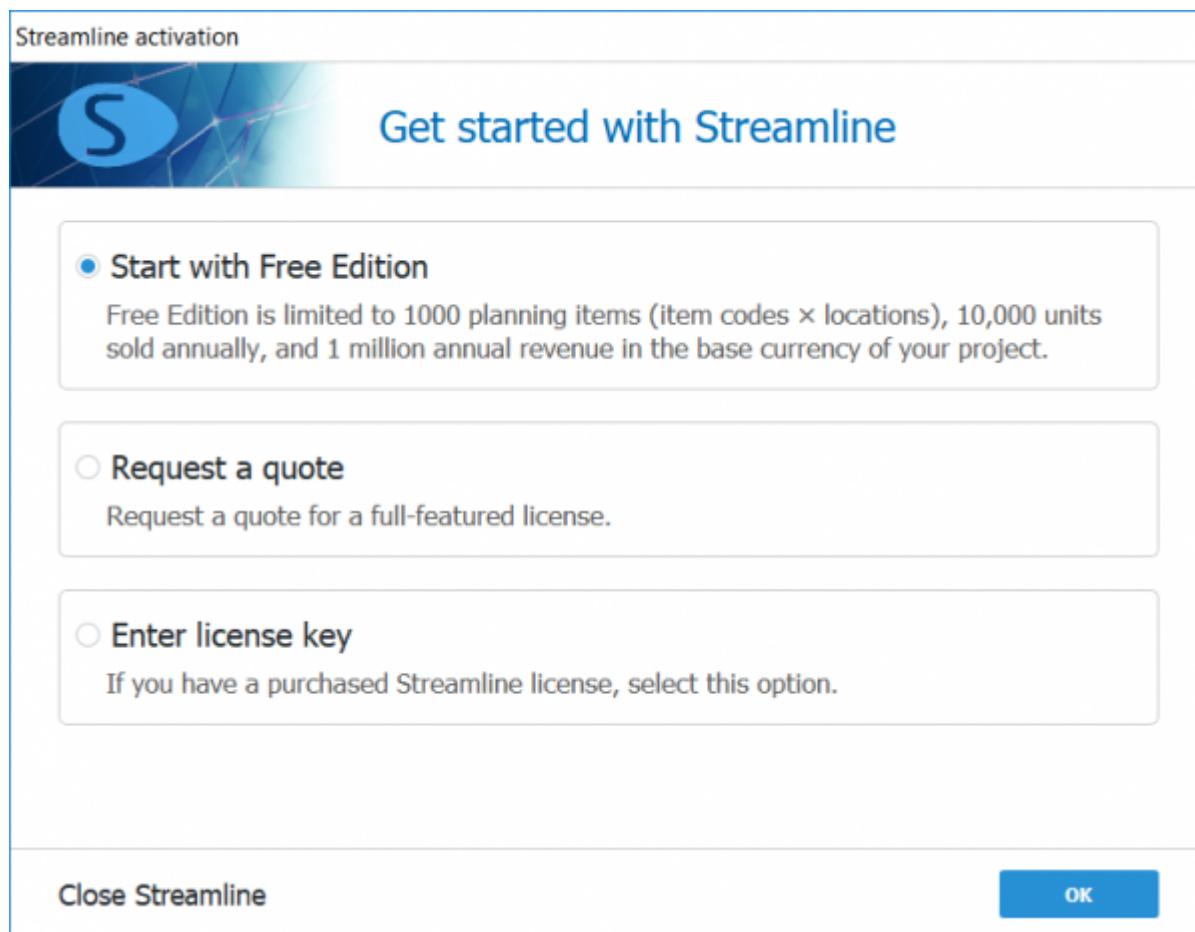


## 1.3. Software activation

When you first run Streamline, it shows the activation window and prompts you to choose a mode in which it will be run in the future (see figure below).



Streamline activation

**S** Get started with Streamline

- Start with Free Edition**  
Free Edition is limited to 1000 planning items (item codes × locations), 10,000 units sold annually, and 1 million annual revenue in the base currency of your project.
- Request a quote**  
Request a quote for a full-featured license.
- Enter license key**  
If you have a purchased Streamline license, select this option.

Close Streamline OK

- **Start with Free Edition.** By default, Streamline is run in a *Free edition* mode.
- **Request a quote.** Choose this option if you would like to book customized demos, get pricing information, or learn more about Streamline capabilities.
- **Enter license key.** Choose this option to activate Streamline in a *Licensed* mode by entering your license key. If the activation process has been successful, Streamline will be run without any restrictions for the subscription period.

### Free Edition

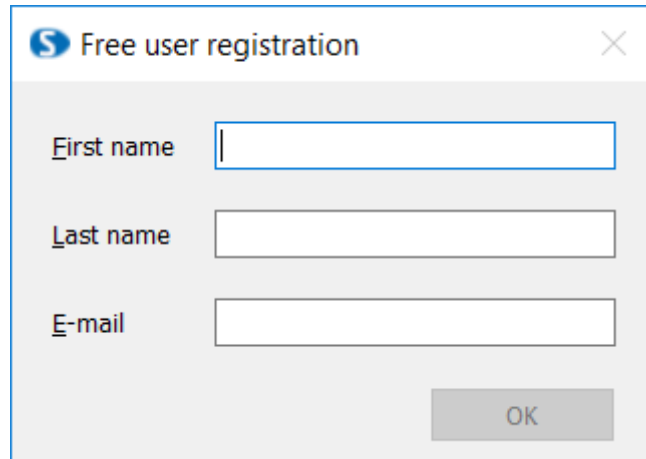
The *Free edition* is limited in a number of planning items, annual revenue, and annual sales quantities. To continue with the *Free Edition*, choose the **Start with Free Edition** option.

The free edition limitations in numbers are:

- Up to US\$ 1M in Annual Revenue
- Up to 1000 Planning Items (SKUs × Locations)
- Up to 10,000 Annual Sales Quantity

To activate the *Free edition*:

1. Choose the **Start with Free Edition** option in the activation window and click **OK**.
2. Fill out the activation form shown in the figure below.



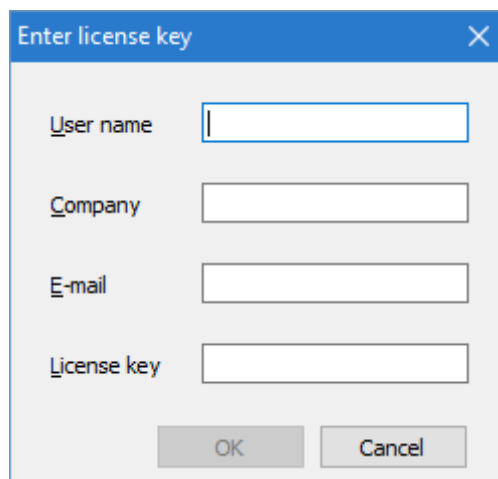
The image shows a dialog box titled "Free user registration" with a close button (X) in the top right corner. It contains three text input fields: "First name", "Last name", and "E-mail". Below the fields is a single "OK" button.

3. Click **OK**.

## Licensed Edition

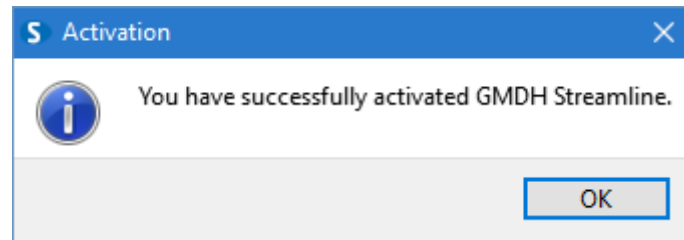
To activate the *Licensed edition*:

1. Choose the **Enter a license key** option in the activation window or go to the menu **Help > Enter a license key**.
2. Fill out the activation form shown in the figure below.



The image shows a dialog box titled "Enter license key" with a close button (X) in the top right corner. It contains four text input fields: "User name", "Company", "E-mail", and "License key". Below the fields are two buttons: "OK" and "Cancel".

3. Streamline is then activated:



Next: [Switching to Another Computer](#)

[Download PDF](#)

From:

<https://gmdhsoftware.com/documentation-sl/> - **GMDH Streamline Docs**

Permanent link:

<https://gmdhsoftware.com/documentation-sl/software-activation>

Last update: **2021/08/27 14:41**

